

Scoping Review Protocol: Decision-making support in palliative care

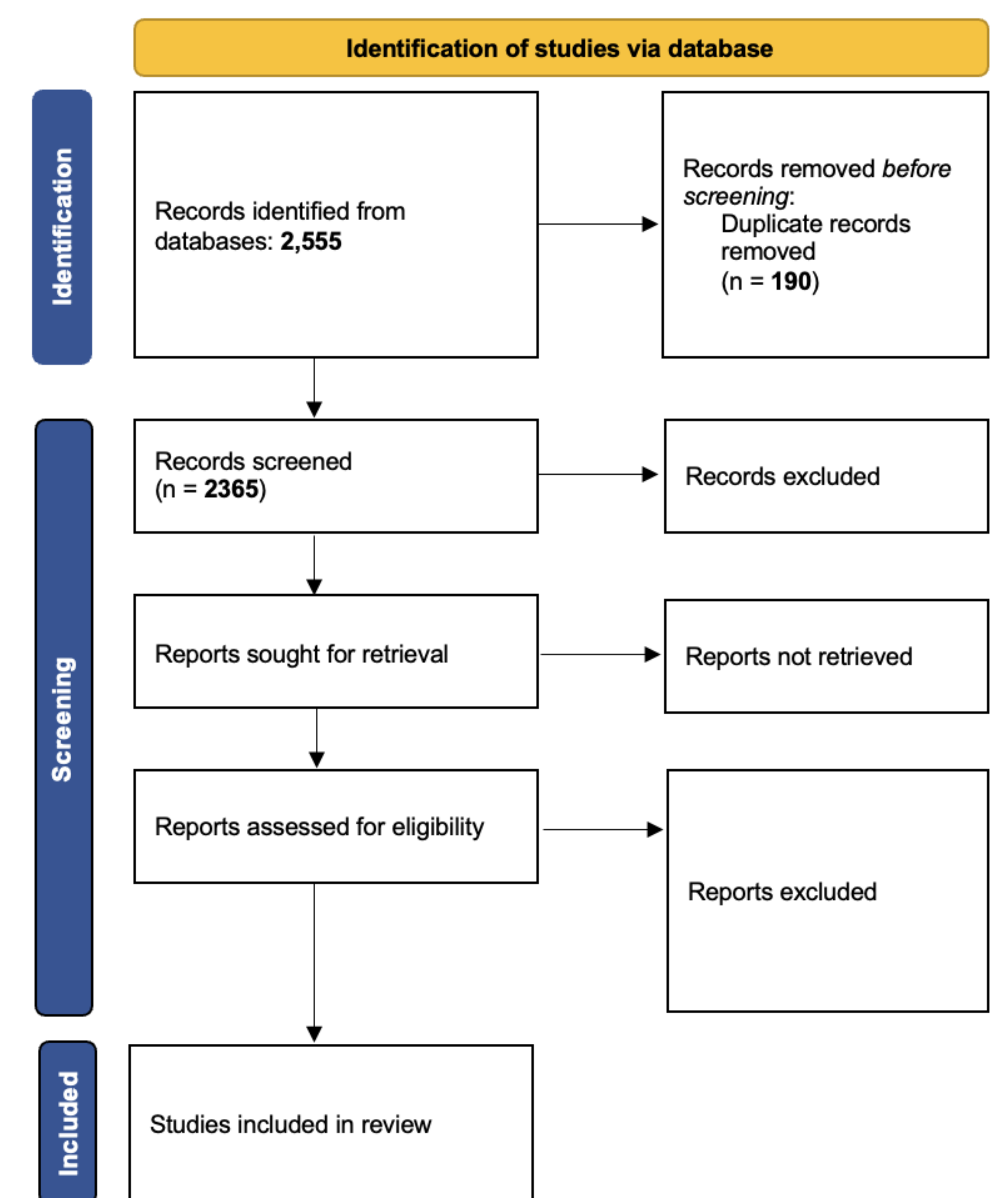
Meredith MacMartin, Madison Spivak, Pallavi Ghanta, Anji Zhu, Elaina Vitale, Amber Barnato, Glyn Elwyn, Catherine H Saunders

RATIONALE

- Specialty palliative care aligns medical decisions with patient goals, but the processes of decision support are poorly defined.
- Prior studies focus on the clinician-patient dyad with little attention to the interdisciplinary team or inpatient setting.
- Existing reviews emphasize shared decision-making (SDM) which may not capture the complexity of serious illness decision support.
- We hypothesize that dedicated decision-making support may be a key mechanism by which palliative care improves outcomes.

RESEARCH QUESTION

- How does the palliative care interdisciplinary team help people make decisions?



Screening flowchart per PRISMA 2020 (Page M J, McKenzie J E, Bossuyt P M, Boutron I, Hoffmann T C, Mulrow C D et al. The PRISMA 2020 statement: an updated guideline for reporting systematic reviews *BMJ* 2021; 372 :n71 doi:10.1136/bmj.n71)

Specialty palliative care helps patients and teams make serious illness decisions, yet the mechanisms of decision support remain unclear.

METHODS

- Framework:** Arksey and O'Malley, PRUSMA-ScR
- Databases** intended to maximize inclusion of interdisciplinary palliative care practices: PubMed, Ovid MedLine, Cochrane Library, Web of Science, CINAHL, Scopus, Sociological Abstracts ProQuest
- Screening:** Title/abstracts and full texts reviewed independently by 2+ reviewers, conflicts resolved by consensus criteria

Include	Exclude
Qualitative, observational, ethnographical studies	RCTS; studies that do not include descriptions of decision-making interventions/care
Specialty hospice/palliative care clinicians; patients/families cared for by palliative care clinicians/teams	Non-specialty palliative care clinicians; patients/families who were not cared for by specialty hospice/palliative care teams
Peer reviewed articles	Gray literature, book reviews, study protocols
English publications	Non-English publications

- Quality Appraisal:** using criteria from prior reviews, bolstered based on the Practical Thematic Approach to qualitative analysis
- Data extraction:** study details, participants, methods, and descriptions of decision support processes

PLANNED ANALYSIS

- Descriptive statistics to summarize study characteristics
- Narrative synthesis to examine patterns in decision-support constructs
- Apply iterative coding and thematic analysis to identify common processes and gaps
- This work will be treated as a "meta qualitative" study and will adhere to/report on the COREQ guidelines

EXPECTED CONTRIBUTIONS

- Clarify how interdisciplinary palliative care teams provide decision support in serious illness
- Expand beyond shared decision-making (SDM) frameworks to capture real-world practices
- Identify gaps to guide future research and improvement in palliative care delivery